

1 LEVEL 03 PLAN
1 : 100 @A1

REFER TO CHILDCARE ARCHITECT'S DRAWINGS FOR DETAILS

- LEGEND
- BUSINESS PREMISES
 - RETAIL
 - INDOOR RECREATION
 - SERVICED APARTMENT
 - INDOOR CHILDCARE
 - OUTDOOR CHILDCARE
 - PLANT/ SERVICES

Key Plan:



Drawing Disclaimer:
Do not scale from drawings.
Verify all dimensions on site before commencing work.
Copying or reproduction of this drawing is strictly prohibited without the consent of PTW Architects

Note
PTW takes no responsibility for external building elements. Anything connected with any design, materials selection, construction or installation of any cladding, facade or external building element must be checked by and remains the responsibility of others, including suitably qualified experts as may be required.

Rev	Amendment	By	Chk*	Date
D	ISSUED FOR DA	WIT	SAS	2021-08-27
C	ISSUED FOR DA	ZGO	SAS	2021-03-12
B	ISSUED FOR DA	ZGO	SAS	2010-11-30
A	ISSUED FOR DA	ZGO	SAS	2020-01-15

*Registered Architect	Consultants
SAS Shilpa Shetye NSW Arch 11027	

Client
KARIMBLA CONSTRUCTION SERVICES (NSW) PTY LTD.

Level 11, Meriton Tower, 528 Kent St, Sydney 2000

Architect
PTW Architects
Level 11, 88 Phillip Street
Sydney NSW 2000 Australia
T +61 2 9232 5877
ptw.com.au

Peddie Thorp & Walker P/L
ABN 23 000 454 624
trading as PTW Architects
NSW Nominated Architects
S Parsons Architect No.6098
D Jones Architect No.4778

PTW

0 1 2 5 8m
1 : 100 @ A1
Project **PA018110**
MERITON SUITES
167 Northumberland, Liverpool

Status
DEVELOPMENT APPLICATION

Title
10-GENERAL ARRANGEMENT PLAN_DA
LEVEL 03 PLAN

Drawing Number
DA-10-1300

Revision
D

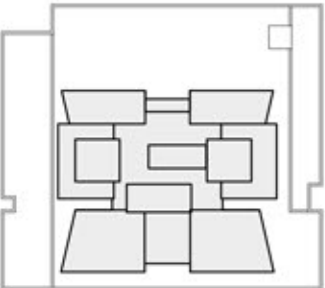
EXTERNAL FINISHES

PAINT FINISHES		POWDERCOAT METAL FINISHES		COLOUR BACK GLASS		GLAZING	
<div></div> P1	White_Light	<div></div> PC1 (match P1)	White_Light	<div></div> CB1 (match P1)	White_Light	<div></div> G1	Tinted Glass
<div></div> P2	White_Medium	<div></div> PC2 (match P2)	White_Medium	<div></div> CB2	CoolGrey_Light	<div></div> G2	Clear Glass - shopfronts
<div></div> P3	Medium Grey	<div></div> PC3 (match P3)	Medium Grey	<div></div> CB3	CoolGrey_Dark	<div></div> G3	Tinted Glass with Frosted Interlayer for Privacy
<div></div> P4	Dark Grey	<div></div> PC4	Dark Grey	<div></div> CB4	WarmGrey_Light	<div></div> G4	Clear Glass with Frosted Interlayer for Privacy
<div></div> P5	WarmGrey_Dark	<div></div> PC5	Champagne	<div></div> CB5	WarmGrey_Medium		
		<div></div> PC6	WarmGrey_Dark	<div></div> CB6 (match P5)	WarmGrey_Dark		
		<div></div> PC7	Gold	<div></div> CB7	Colourback To Match G1		



1 EAST ELEVATION - NORTHUMBERLAND STREET
1 : 200 @A1

Key Plan:



Drawing Disclaimer:

Do not scale from drawings.
Verify all dimensions on site before commencing work.
Copying or reproduction of this drawing is strictly prohibited without the consent of PTW Architects

Note

PTW takes no responsibility for external building elements. Anything connected with any design, materials selection, construction or installation of any cladding, facade or external building element must be checked by and remains the responsibility of others, including suitably qualified experts as may be required.

Rev	Amendment	By	Chk*	Date
C	ISSUED FOR DA	WIT	SAS	2021-05-04
B	ISSUED FOR DA	ZGO	SAS	2021-03-12
A	ISSUED FOR DA	ZGO	SAS	2020-01-15

*Registered Architect	
SAS	Shilpa Shetye NSW Arch 11027

Consultants

Client
KARIMBLA CONSTRUCTION SERVICES (NSW) PTY LTD.

Level 11, Meriton Tower, 528 Kent St, Sydney 2000

Architect
PTW Architects
Level 11, 88 Phillip Street
Sydney NSW 2000 Australia
T +61 2 9232 5877
ptw.com.au

Peddie Thorp & Walker P/L
ABN 23 000 454 624
trading as PTW Architects

NSW Nominated Architects
S Parsons Architect No.6098
D Jones Architect No.4778

PTW

0 1 2 5 8m
As indicated @ A1
Project PA018110
MERITON SUITES
167 Northumberland, Liverpool
Status
DEVELOPMENT APPLICATION

Title
20-ELEVATIONS
EAST ELEVATION - NORTHUMBERLAND ST
Drawing Number
DA-20-0100
Revision
C

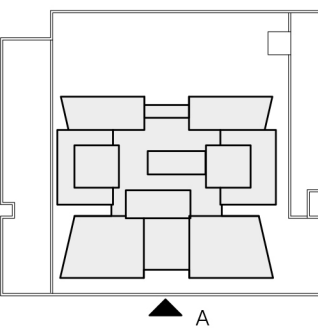
EXTERNAL FINISHES

PAINT FINISHES		POWDERCOAT METAL FINISHES		COLOUR BACK GLASS		GLAZING	
<div></div>	P1 White_Light	<div></div>	PC1 (match P1) White_Light	<div></div>	CB1 (match P1) White_Light	<div></div>	G1 Tinted Glass
<div></div>	P2 White_Medium	<div></div>	PC2 (match P2) White_Medium	<div></div>	CB2 CoolGrey_Light	<div></div>	G2 Clear Glass - shopfronts
<div></div>	P3 Medium Grey	<div></div>	PC3 (match P3) Medium Grey	<div></div>	CB3 CoolGrey_Dark	<div></div>	G3 Tinted Glass with Frosted Interlayer for Privacy
<div></div>	P4 Dark Grey	<div></div>	PC4 Dark Grey	<div></div>	CB4 WarmGrey_Light	<div></div>	G4 Clear Glass with Frosted Interlayer for Privacy
<div></div>	P5 WarmGrey_Dark	<div></div>	PC5 Champagne	<div></div>	CB5 WarmGrey_Medium		
		<div></div>	PC6 WarmGrey_Dark	<div></div>	CB6 (match P5) WarmGrey_Dark		
		<div></div>	PC7 Gold	<div></div>	CB7 Colourback To Match G1		



1 SOUTH ELEVATION - LANEWAY
1 : 200 @A1

Key Plan:



Drawing Disclaimer:
Do not scale from drawings.
Verify all dimensions on site before commencing work.
Copying or reproduction of this drawing is strictly prohibited without the consent of PTW Architects

Note
PTW takes no responsibility for external building elements. Anything connected with any design, materials selection, construction or installation of any cladding, facade or external building element must be checked by and remains the responsibility of others, including suitably qualified experts as may be required.

Rev	Amendment	By	Chk*	Date
D	ISSUED FOR DA	WIT	SAS	2021-08-27
C	ISSUED FOR DA	ZGO	SAS	2021-03-12
B	ISSUED FOR DA	ZGO	SAS	2010-11-30
A	ISSUED FOR DA	ZGO	SAS	2020-01-15

*Registered Architect	
SAS	Shilpa Shetye
NSW Arch 11027	

Consultants

Client
KARIMBLA CONSTRUCTION SERVICES (NSW) PTY LTD.

Level 11, Meriton Tower, 528 Kent St, Sydney 2000

Architect
PTW Architects
Level 11, 88 Phillip Street
Sydney NSW 2000 Australia
T +61 2 9232 5877
ptw.com.au

Peddle Thorp & Walker P/L
ABN 23 000 454 624
trading as PTW Architects
NSW Nominated Architects
S Parsons Architect No 6098
D Jones Architect No 4778

PTW
MERITON SUITES
167 Northumberland, Liverpool

Status
DEVELOPMENT APPLICATION

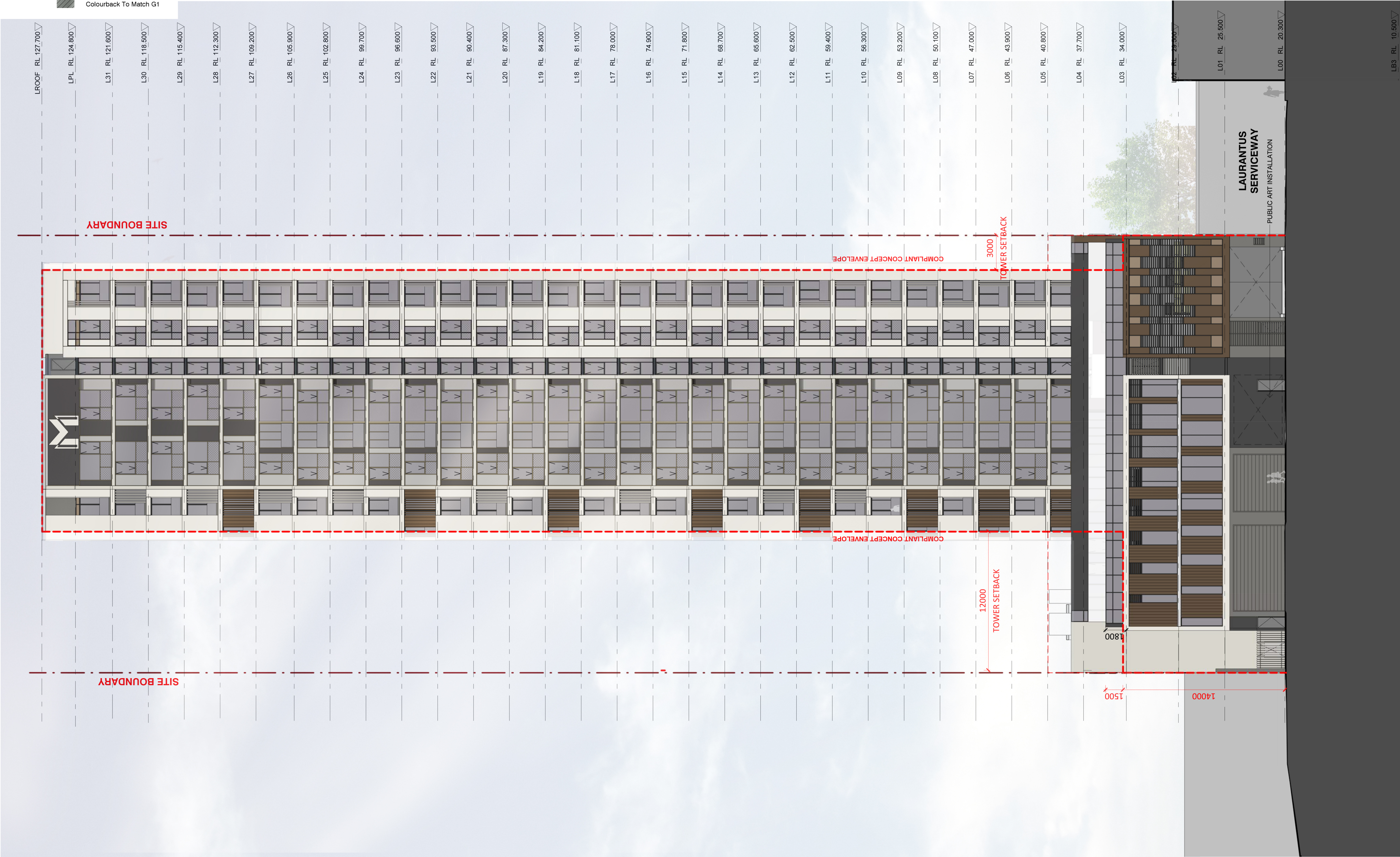
0 1 2 5 8m
As indicated
@ A1
Project PA018110
MERITON SUITES
167 Northumberland, Liverpool

Drawing Number
DA-20-0200

Revision
D

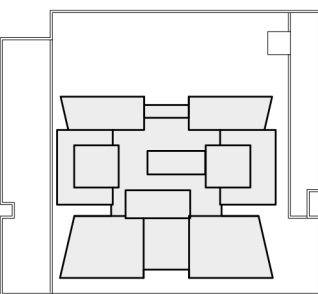
EXTERNAL FINISHES

PAINT FINISHES		POWDERCOAT METAL FINISHES		COLOUR BACK GLASS		GLAZING	
<div></div>	P1 White_Light	<div></div>	PC1 (match P1) White_Light	<div></div>	CB1 (match P1) White_Light	<div></div>	G1 Tinted Glass
<div></div>	P2 White_Medium	<div></div>	PC2 (match P2) White_Medium	<div></div>	CB2 CoolGrey_Light	<div></div>	G2 Clear Glass - shopfronts
<div></div>	P3 Medium Grey	<div></div>	PC3 (match P3) Medium Grey	<div></div>	CB3 CoolGrey_Dark	<div></div>	G3 Tinted Glass with Frosted Interlayer for Privacy
<div></div>	P4 Dark Grey	<div></div>	PC4 Dark Grey	<div></div>	CB4 WarmGrey_Light	<div></div>	G4 Clear Glass with Frosted Interlayer for Privacy
<div></div>	P5 WarmGrey_Dark	<div></div>	PC5 Champagne	<div></div>	CB5 WarmGrey_Medium		
		<div></div>	PC6 WarmGrey_Dark	<div></div>	CB6 (match P5) WarmGrey_Dark		
		<div></div>	PC7 Gold		CB7 Colourback To Match G1		



1 WEST ELEVATION - SERVICEWAY
1 : 200 @A1

Key Plan:



Drawing Disclaimer:
Do not scale from drawings.
Verify all dimensions on site before commencing work.
Copying or reproduction of this drawing is strictly prohibited without the consent of PTW Architects

Note
PTW takes no responsibility for external building elements. Anything connected with any design, materials selection, construction or installation of any cladding, facade or external building element must be checked by and remains the responsibility of others, including suitably qualified experts as may be required.

Rev	Amendment	By	Chk*	Date
D	ISSUED FOR DA	WIT	SAS	2021-08-27
C	ISSUED FOR DA	WIT	SAS	2021-05-04
B	ISSUED FOR DA	ZGO	SAS	2021-03-12
A	ISSUED FOR DA	ZGO	SAS	2020-01-15

*Registered Architect	
SAS	Shilpa Shetye
NSW Arch 11027	

Consultants	

Client	
KARIMBLA CONSTRUCTION SERVICES (NSW) PTY LTD.	
Level 11, Meriton Tower, 528 Kent St, Sydney 2000	

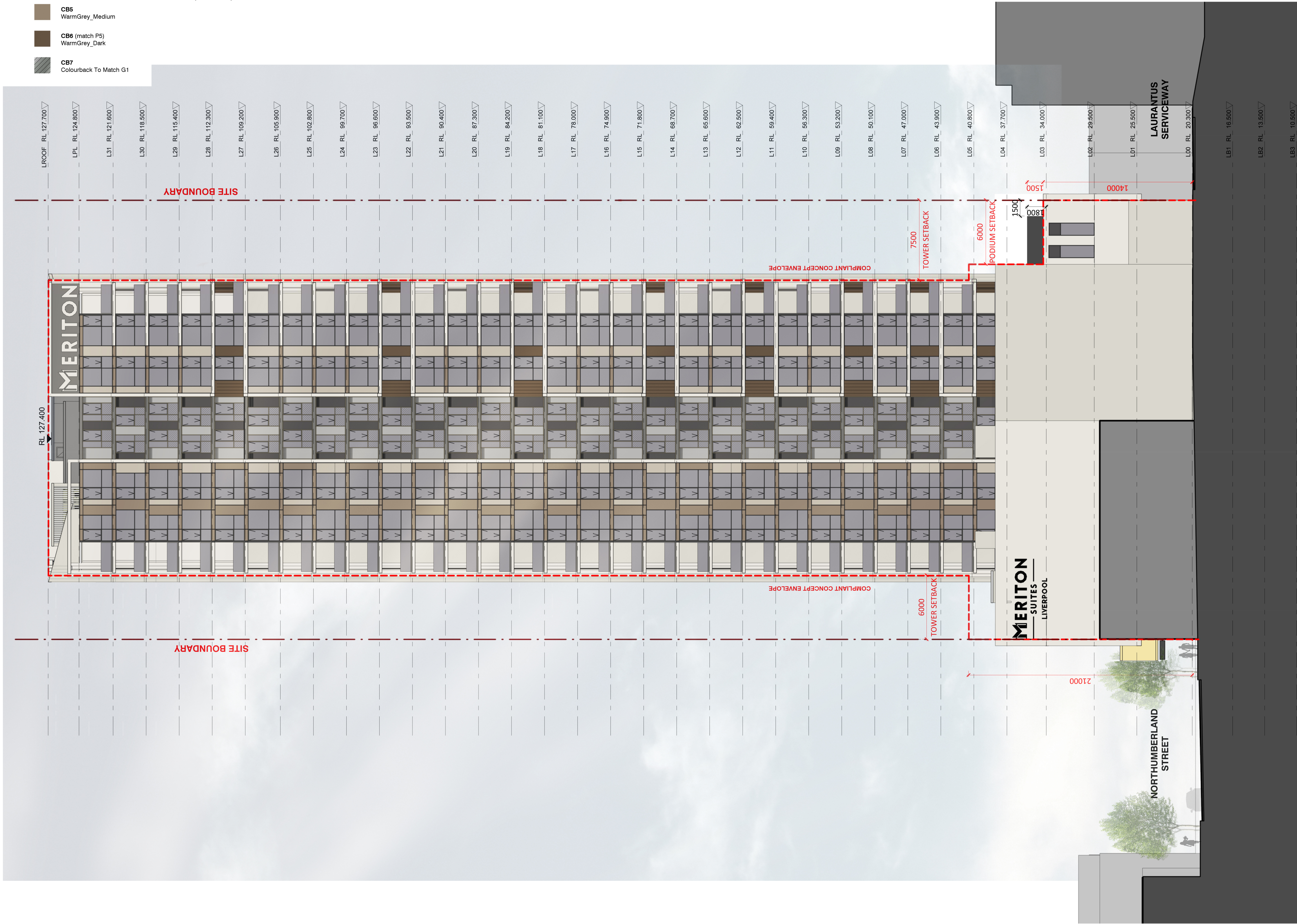
Architect	
PTW Architects Level 11, 88 Phillip Street Sydney NSW 2000 Australia T +61 2 9232 5877 ptw.com.au	
Peddie Thorp & Walker P/L ABN 23 000 454 624 trading as PTW Architects	NSW Nominated Architects S Parsons Architect No.6098 D Jones Architect No.4778

PTW	
As indicated @ A1 Project PA018110 MERITON SUITES 167 Northumberland, Liverpool	
Status DEVELOPMENT APPLICATION	

Title	
20-ELEVATIONS WEST ELEVATION - SERVICEWAY	
Drawing Number	Revision
DA-20-0300	D

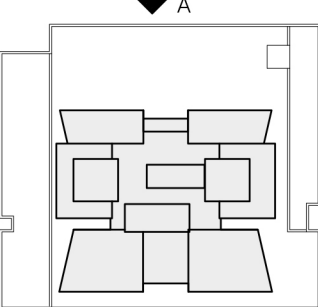
EXTERNAL FINISHES

PAINT FINISHES		POWDERCOAT METAL FINISHES		COLOUR BACK GLASS		GLAZING	
	P1 White_Light		PC1 (match P1) White_Light		CB1 (match P1) White_Light		G1 Tinted Glass
	P2 White_Medium		PC2 (match P2) White_Medium		CB2 CoolGrey_Light		G2 Clear Glass - shopfronts
	P3 Medium Grey		PC3 (match P3) Medium Grey		CB3 CoolGrey_Dark		G3 Tinted Glass with Frosted Interlayer for Privacy
	P4 Dark Grey		PC4 Dark Grey		CB4 WarmGrey_Light		G4 Clear Glass with Frosted Interlayer for Privacy
	P5 WarmGrey_Dark		PC5 Champagne		CB5 WarmGrey_Medium		
			PC6 WarmGrey_Dark		CB6 (match P5) WarmGrey_Dark		
			PC7 Gold		CB7 Colourback To Match G1		



1 NORTH ELEVATION
1 : 200 @A1

Key Plan:



Drawing Disclaimer:
Do not scale from drawings.
Verify all dimensions on site before commencing work.
Copying or reproduction of this drawing is strictly prohibited without the consent of PTW Architects

Note
PTW takes no responsibility for external building elements. Anything connected with any design, materials selection, construction or installation of any cladding, facade or external building element must be checked by and remains the responsibility of others, including suitably qualified experts as may be required.

Rev	Amendment	By	Chk*	Date
D	ISSUED FOR DA	WIT	SAS	2021-08-27
C	ISSUED FOR DA	WIT	SAS	2021-05-04
B	ISSUED FOR DA	ZGO	SAS	2021-03-12
A	ISSUED FOR DA	ZGO	SAS	2020-01-15

*Registered Architect	
SAS	Shilpa Shetye NSW Arch 11027

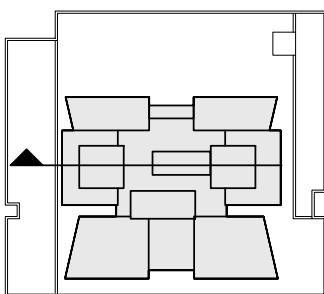
Consultants

Client
KARIMBLA CONSTRUCTION SERVICES (NSW) PTY LTD.
Level 11, Meriton Tower, 528 Kent St, Sydney 2000

Architect
PTW Architects Level 11, 88 Phillip Street Sydney NSW 2000 Australia T +61 2 9232 5877 ptw.com.au
<small>Peddie Thorp & Walker P/L ABN 23 000 454 624 trading as PTW Architects</small>
<small>NSW Nominated Architects S Parsons Architect No.6098 D Jones Architect No.4778</small>

0 1 2 5 8m
As indicated
Project PA018110
MERITON SUITES 167 Northumberland, Liverpool
Status DEVELOPMENT APPLICATION

Title 20-ELEVATIONS NORTH ELEVATION	Revision D
Drawing Number DA-20-0400	



Drawing Disclaimer:
Do not scale from drawings.
Verify all dimensions on site before commencing work.
Copying or reproduction of this drawing is strictly prohibited without the consent of PTW Architects

Note
PTW takes no responsibility for external building elements. Anything connected with any design, materials selection, construction or installation of any cladding, facade or external building element must be checked by and remains the responsibility of others, including suitably qualified experts as may be required.

Rev	Amendment	By	Chk*	Date
D	ISSUED FOR DA	WIT	SAS	2021-08-27
C	ISSUED FOR DA	WIT	SAS	2021-05-04
B	ISSUED FOR DA	ZGO	SAS	2021-03-12
A	ISSUED FOR DA	ZGO	SAS	2020-01-15

*Registered Architect
SAS Shilpa Shetye NSW Arch 11027

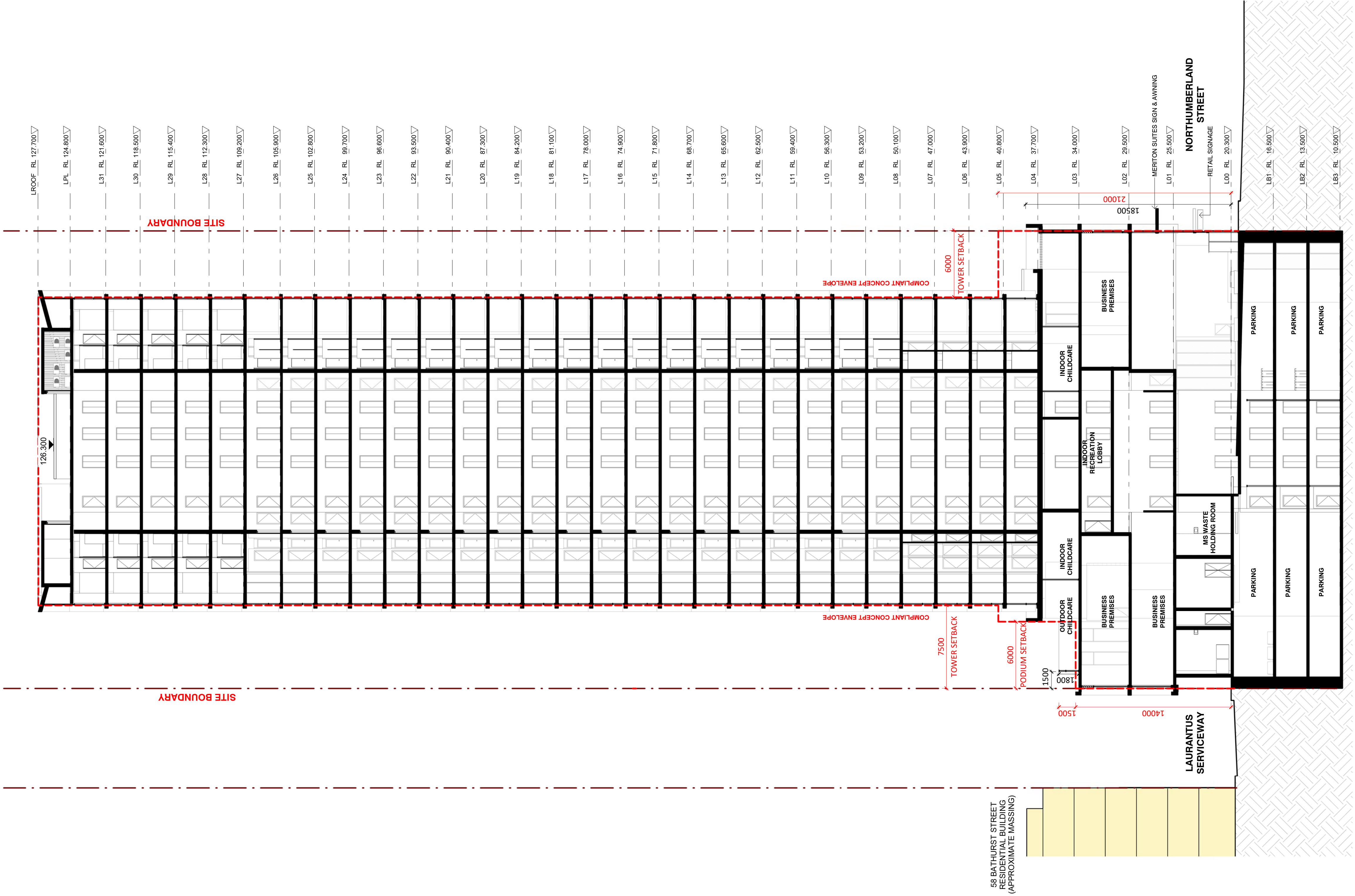
Consultants

Client
KARIMBLA CONSTRUCTION SERVICES (NSW) PTY LTD.
Level 11, Meriton Tower, 528 Kent St, Sydney 2000

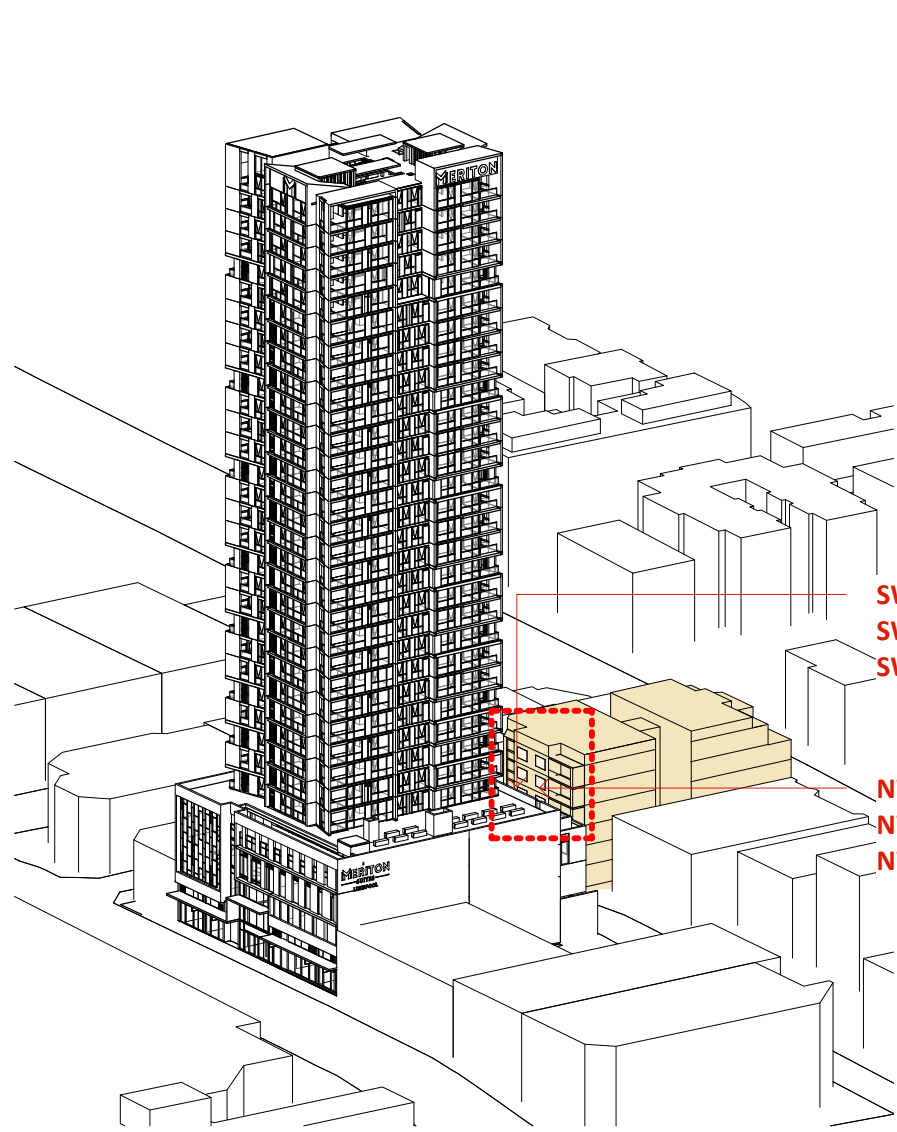
Architect
PTW Architects Level 11, 88 Phillip Street Sydney NSW 2000 Australia T +61 2 9232 5877 ptw.com.au
<small>Peddie Thorp & Walker P/L ABN 23 000 454 624 Trading as PTW Architects</small>
<small>NSW Nominated Architects S Parsons Architect No.6098 D Jones Architect No.4778</small>

0	1	2	5	8m
As indicated	@ A1			
Project	PA018110			
MERITON SUITES 167 Northumberland, Liverpool				
Status	DEVELOPMENT APPLICATION			

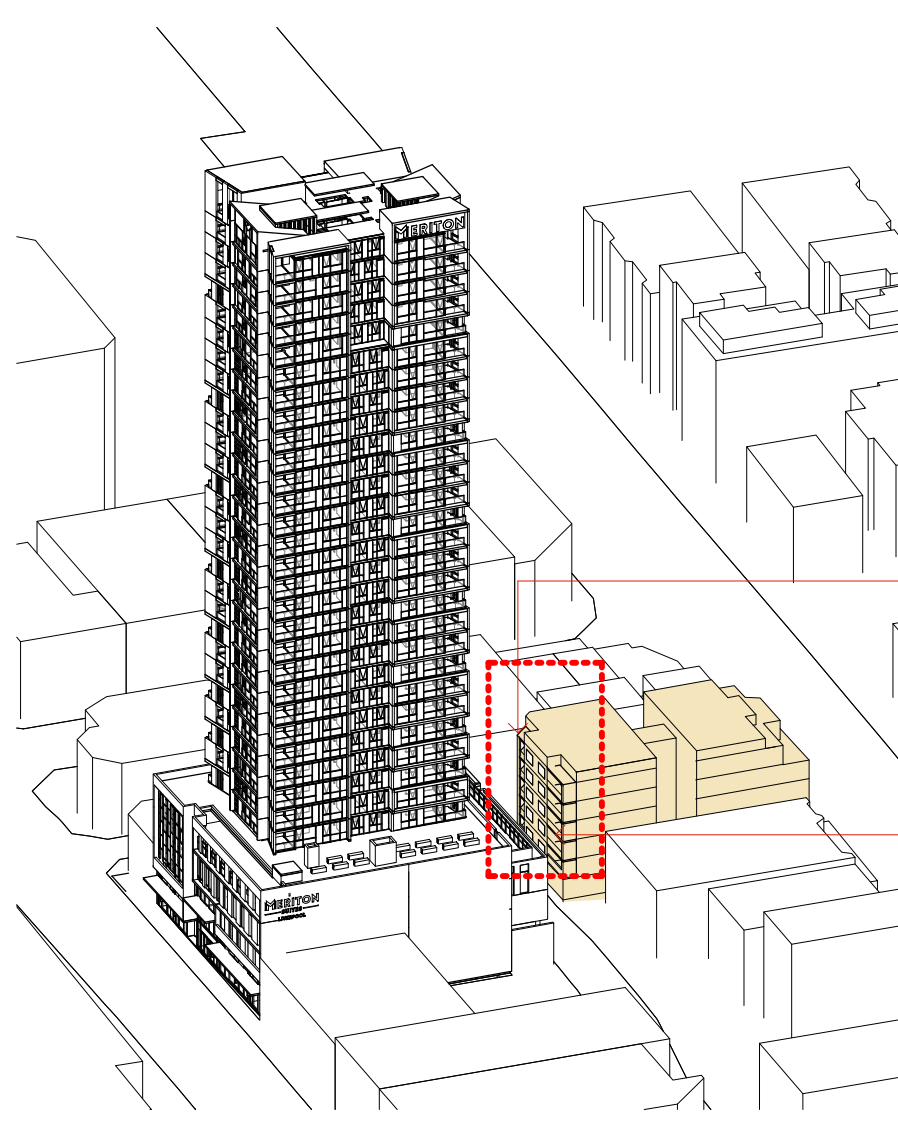
Title	30-SECTIONS EAST WEST SECTION
Drawing Number	DA-30-0300
Revision	D



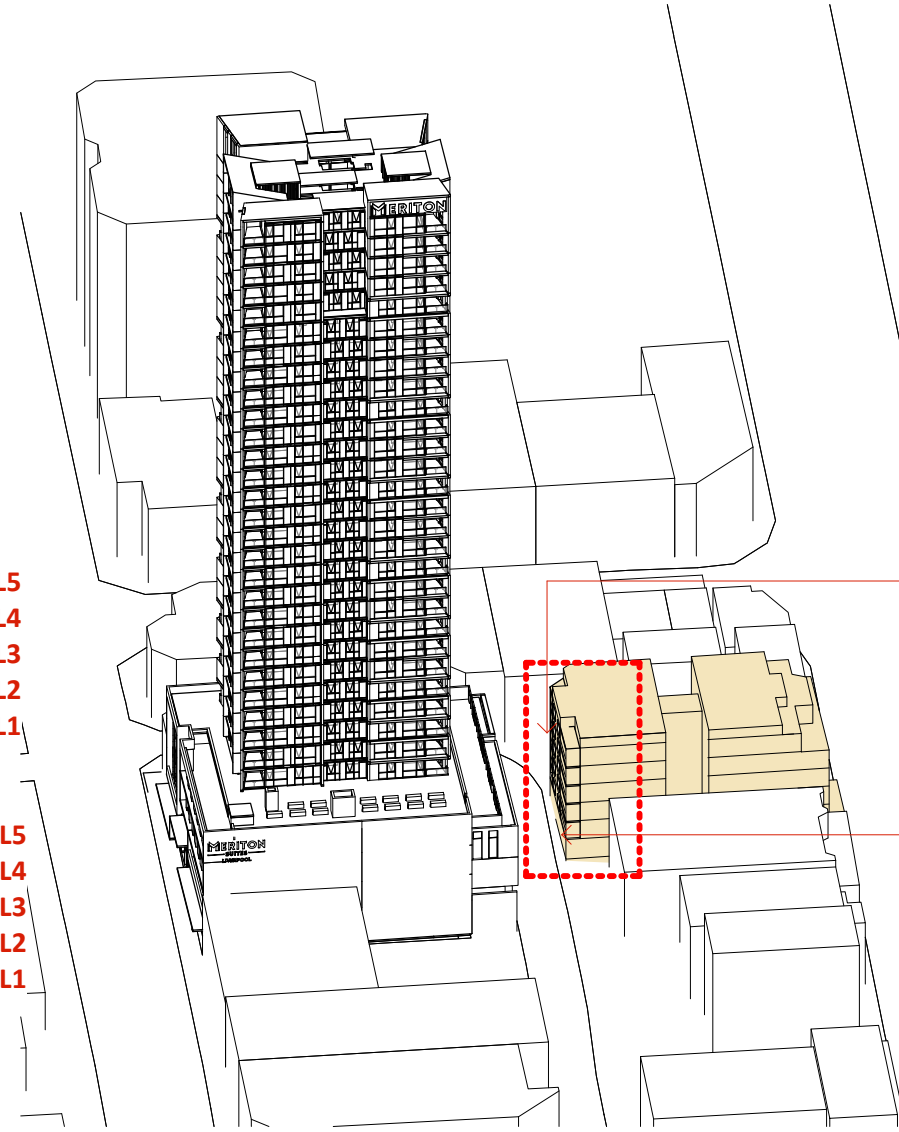
1 EAST-WEST SECTION
1 : 200



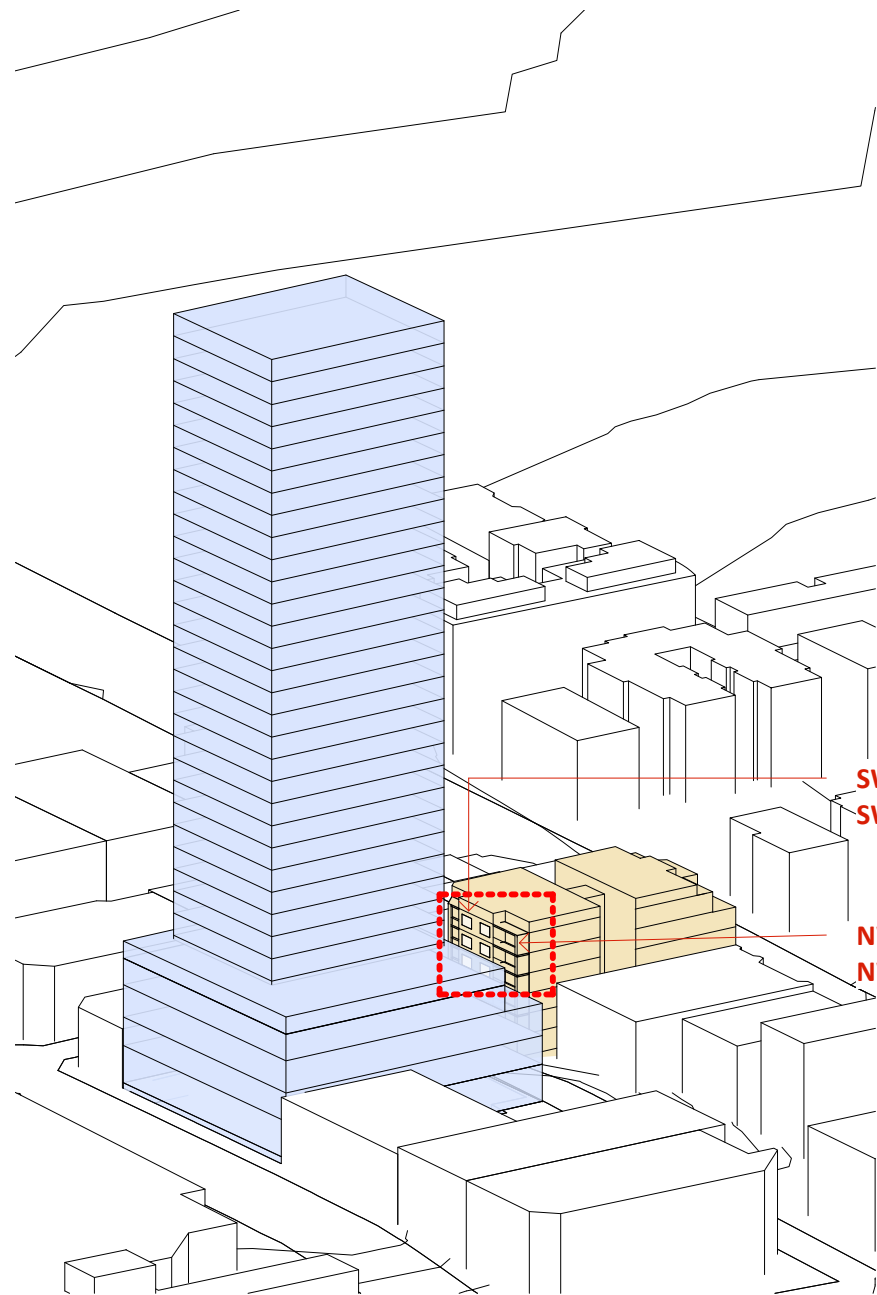
STAGE 2 DA PODIUM SOLAR STUDY
21 JUNE 09:00 AM



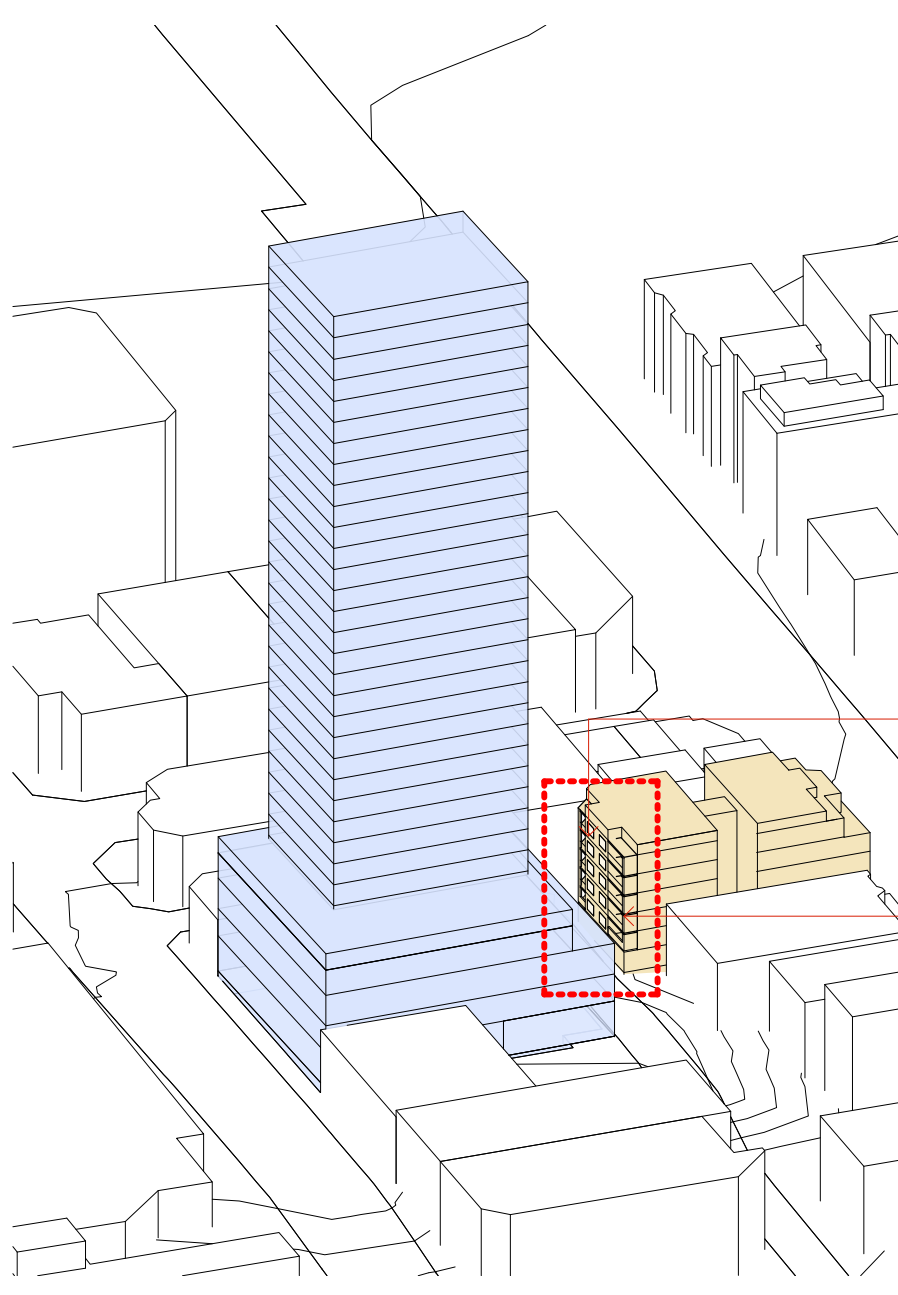
STAGE 2 DA PODIUM SOLAR STUDY
21 JUNE 10:00 AM



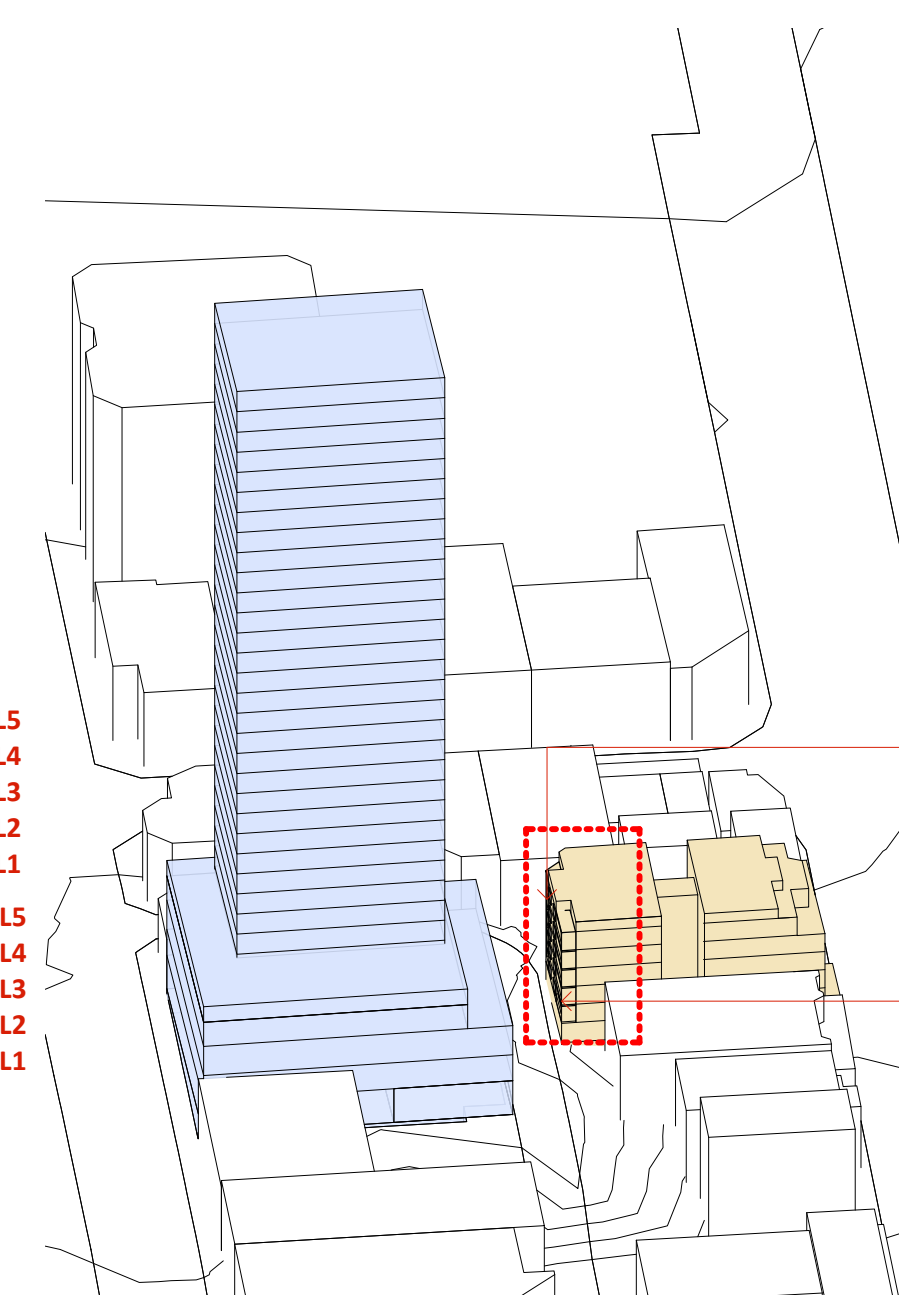
STAGE 2 DA PODIUM SOLAR STUDY
21 JUNE 11:00 AM



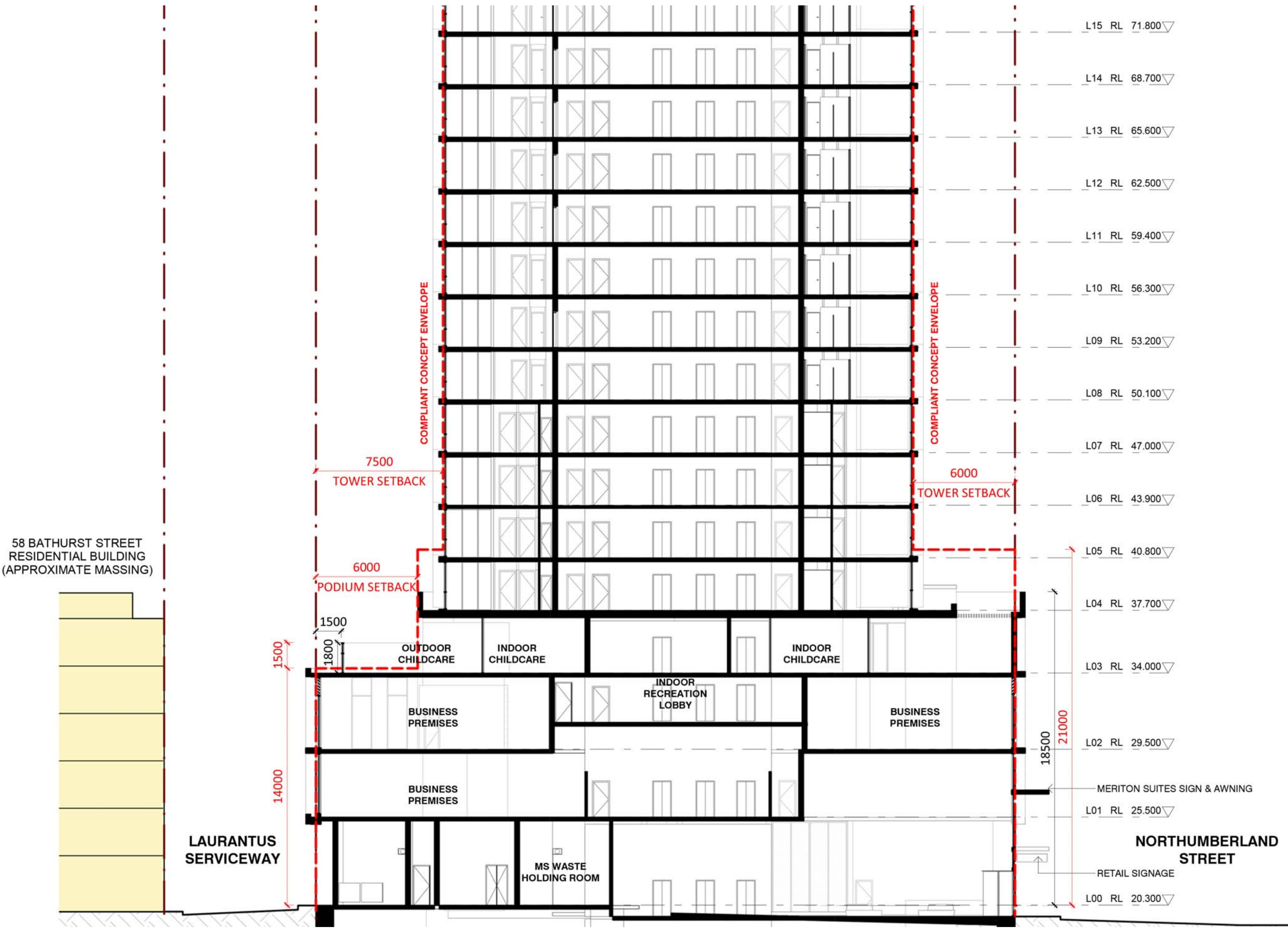
APPROVED CONCEPT PODIUM SOLAR STUDY
21 JUNE 09:00 AM



APPROVED CONCEPT PODIUM SOLAR STUDY
21 JUNE 10:00 AM



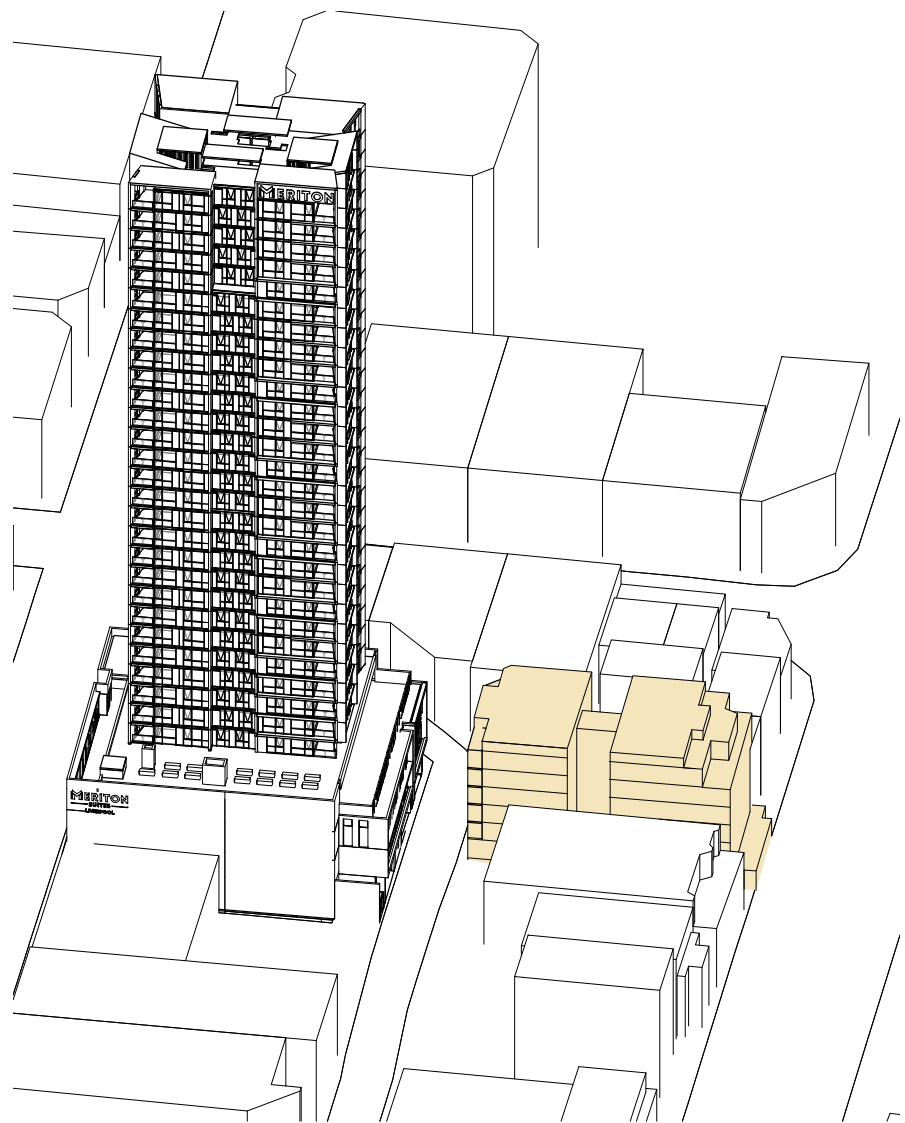
APPROVED CONCEPT PODIUM SOLAR STUDY
21 JUNE 11:00AM



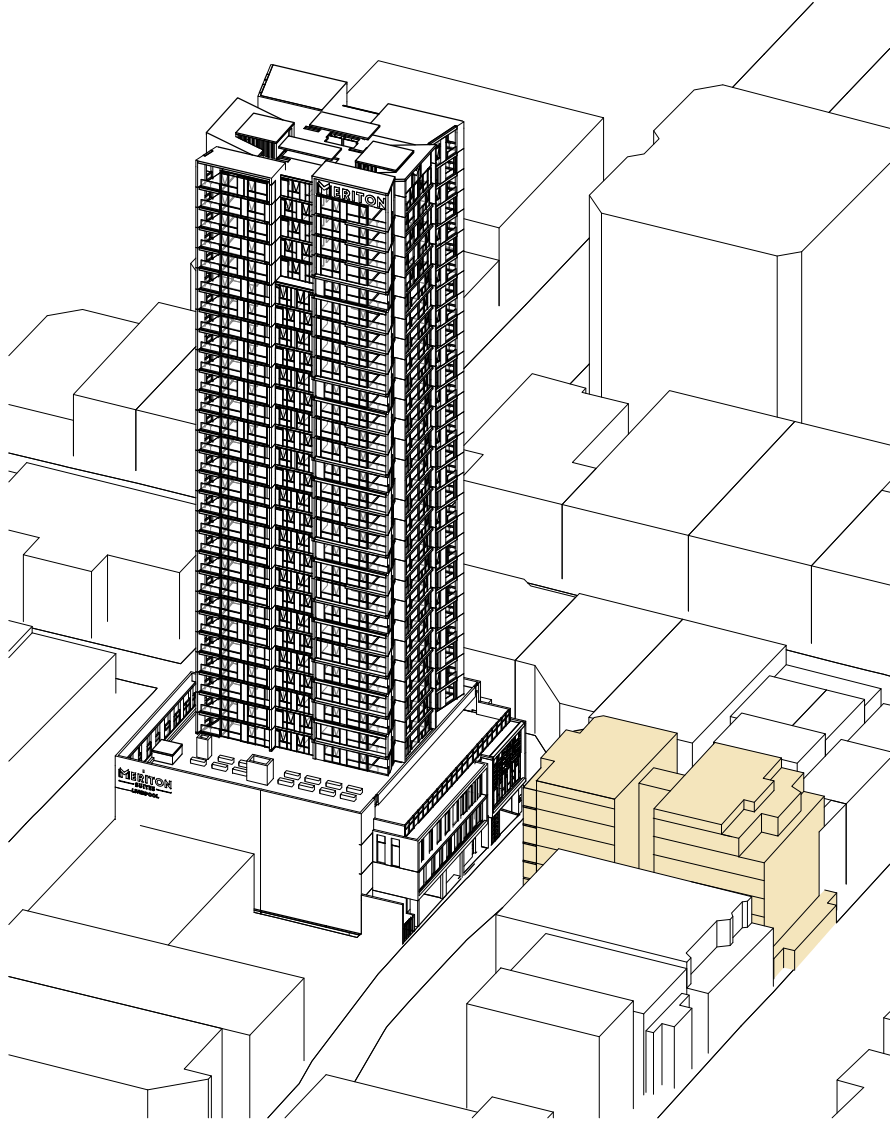
EAST- WEST SECTION STAGE 2 DA OVERLAID WITH APPROVED CONCEPT ENVELOPE (IN RED)

NOTE:
ALL INFORMATION RELATED WITH EXISTING RESIDENTIAL DEVELOPMENT AT 58 BATHURST STREET IS APPROXIMATE BASED ON NEARMAP AND GOOGLE STREET VISUALS.
IT IS NOTED THAT ACCURATE INFORMATION ABOUT BUILDING SURVEY, APARTMENT LAYOUTS, BUILDING HEIGHTS ETC. IS NOT AVAILABLE.

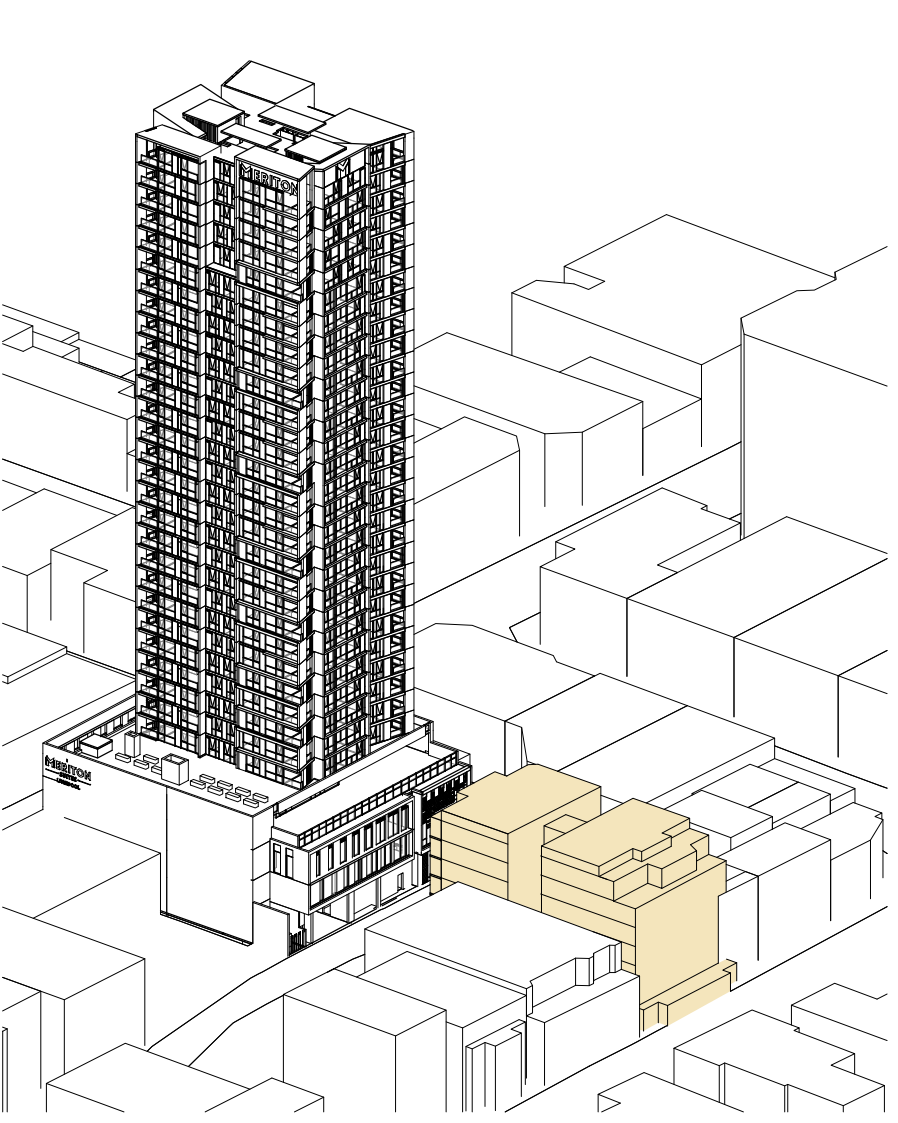
Key Plan:	<div>Drawing Disclaimer: Do not scale from drawings. Verify all dimensions on site before commencing work. Copying or reproduction of this drawing is strictly prohibited without the consent of PTW Architects</div> <div>Note PTW takes no responsibility for external building elements. Anything connected with any design, materials selection, construction or installation of any cladding, facade or external building element must be checked by and remains the responsibility of others, including suitably qualified experts as may be required.</div>	<table><tr><th>Rev</th><th>Amendment</th><th>By</th><th>Chk*</th><th>Date</th></tr><tr><td>A</td><td>ISSUED FOR DA</td><td>WIT</td><td>SAS</td><td>27/08/2021</td></tr></table>	Rev	Amendment	By	Chk*	Date	A	ISSUED FOR DA	WIT	SAS	27/08/2021	<table><tr><th>*Registered Architect</th><th>Consultants</th></tr><tr><td>SAS Shilpa Shetye NSW Arch 11027</td><td></td></tr></table>	*Registered Architect	Consultants	SAS Shilpa Shetye NSW Arch 11027		<table><tr><th>Client</th></tr><tr><td>MERITON</td></tr><tr><td>Level 11, Meriton Tower, 528 Kent St, Sydney 2000</td></tr></table>	Client	MERITON	Level 11, Meriton Tower, 528 Kent St, Sydney 2000	<table><tr><th>Architect</th></tr><tr><td>PTW Architects Level 11, 88 Phillip Street Sydney NSW 2000 Australia T +61 2 9232 5877 ptw.com.au</td></tr><tr><td>Peddie Thorp & Walker P/L ABN 23 000 454 624 trading as PTW Architects</td><td>NSW Nominated Architects S Parsons Architect No.6098 D Jones Architect No.4778</td></tr></table>	Architect	PTW Architects Level 11, 88 Phillip Street Sydney NSW 2000 Australia T +61 2 9232 5877 ptw.com.au	Peddie Thorp & Walker P/L ABN 23 000 454 624 trading as PTW Architects	NSW Nominated Architects S Parsons Architect No.6098 D Jones Architect No.4778	<div>PTW</div> <div>NOT TO SCALE</div> <div>Project PA018110</div> <div>MERITON SUITES 167 Northumberland, Liverpool</div> <div>Status DEVELOPMENT APPLICATION</div>	<div>Title 93-SOLAR ACCESS SUN EYE VIEWS - SHEET 1 OF 3</div> <div>Drawing Number DA-93-0110</div> <div>Revision A</div>
	Rev	Amendment	By	Chk*	Date																							
A	ISSUED FOR DA	WIT	SAS	27/08/2021																								
*Registered Architect	Consultants																											
SAS Shilpa Shetye NSW Arch 11027																												
Client																												
MERITON																												
Level 11, Meriton Tower, 528 Kent St, Sydney 2000																												
Architect																												
PTW Architects Level 11, 88 Phillip Street Sydney NSW 2000 Australia T +61 2 9232 5877 ptw.com.au																												
Peddie Thorp & Walker P/L ABN 23 000 454 624 trading as PTW Architects	NSW Nominated Architects S Parsons Architect No.6098 D Jones Architect No.4778																											



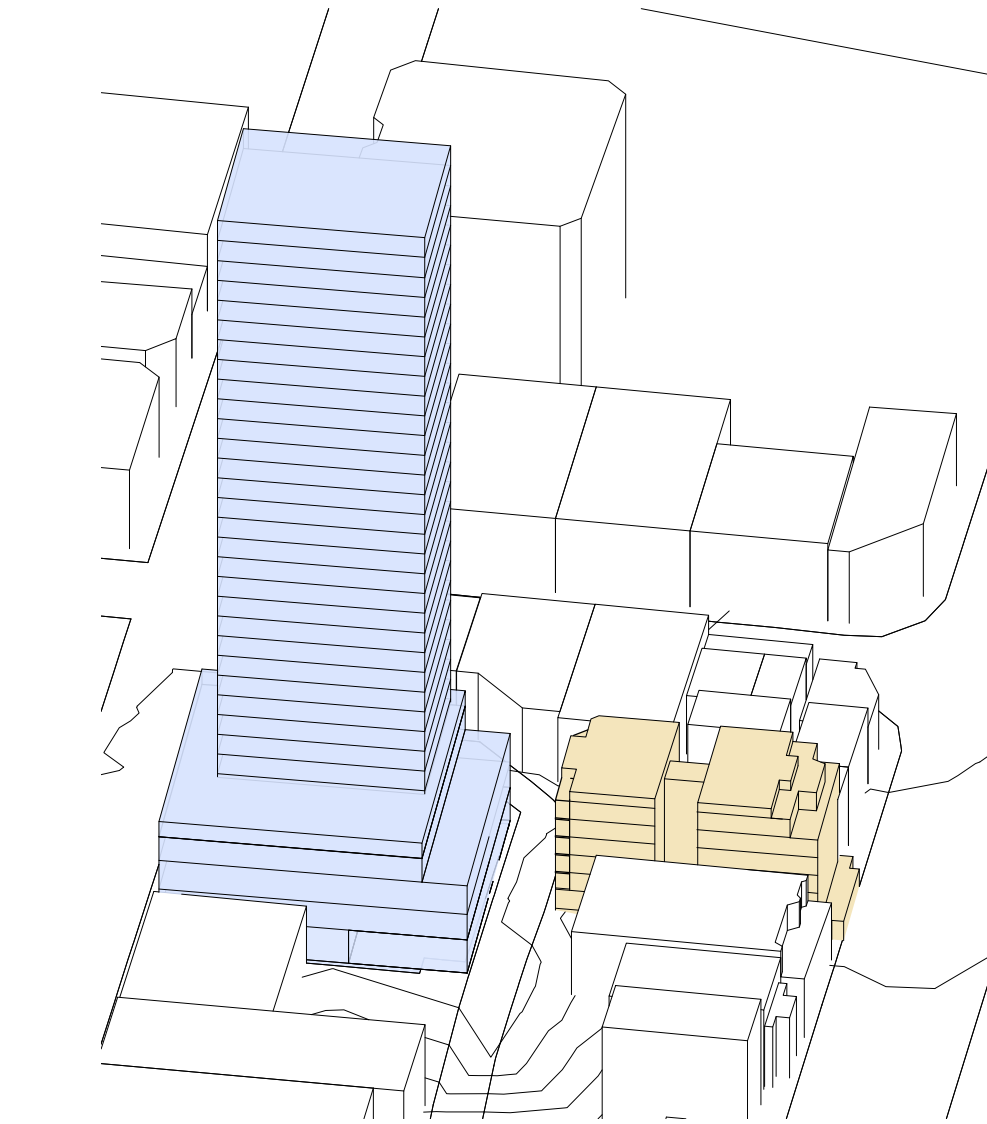
STAGE 2 DA PODIUM SOLAR STUDY
21 JUNE 12:00 PM



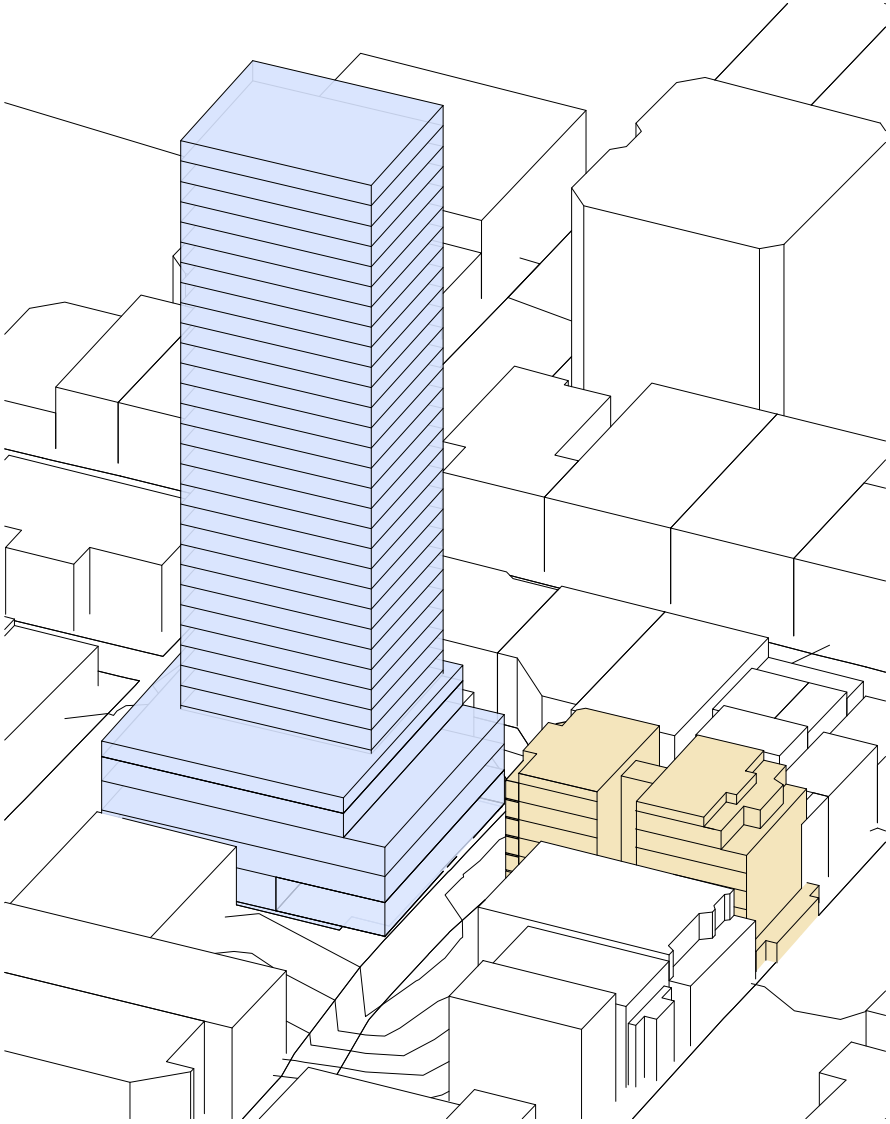
STAGE 2 DA PODIUM SOLAR STUDY
21 JUNE 1:00 PM



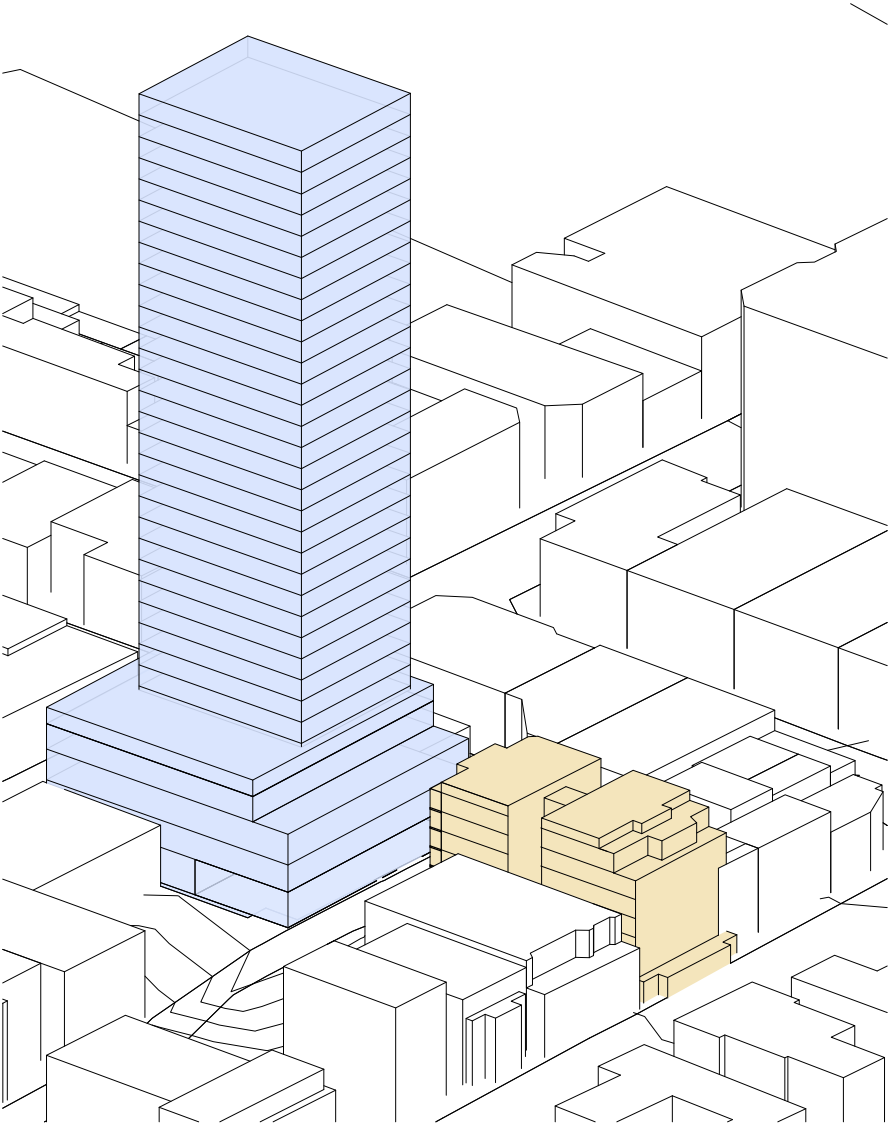
STAGE 2 DA PODIUM SOLAR STUDY
21 JUNE 2:00 PM



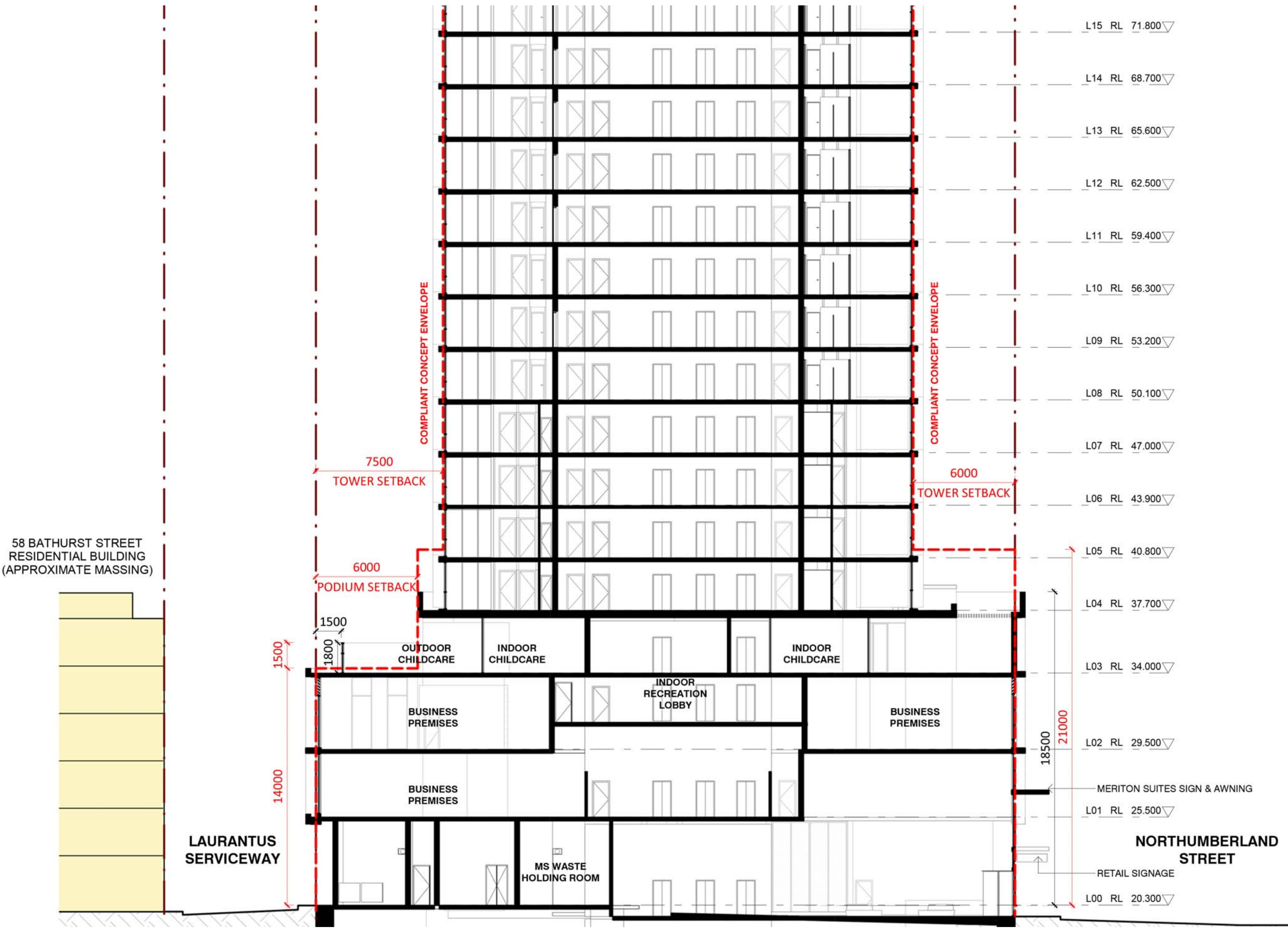
APPROVED CONCEPT PODIUM SOLAR STUDY
21 JUNE 12:00 PM



APPROVED CONCEPT PODIUM SOLAR STUDY
21 JUNE 1:00 PM



APPROVED CONCEPT PODIUM SOLAR STUDY
21 JUNE 2:00 PM

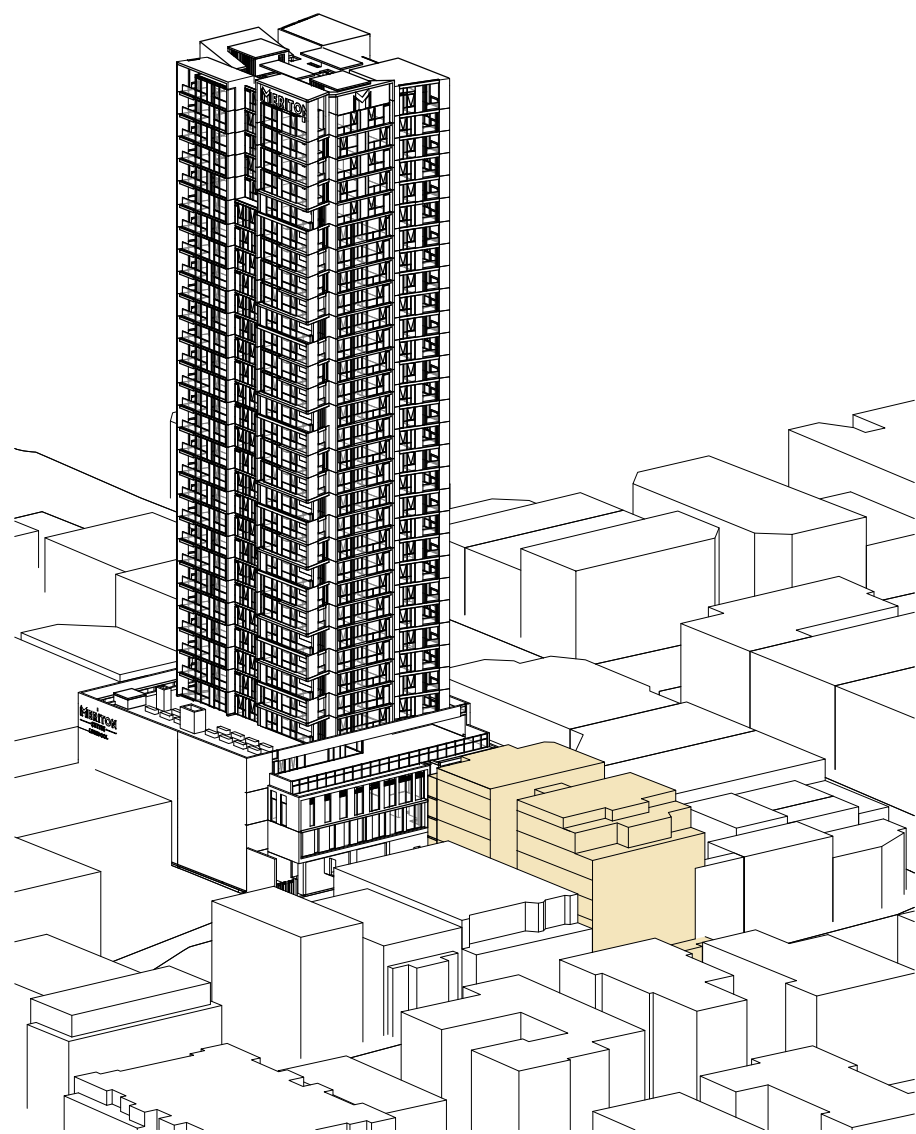


EAST- WEST SECTION STAGE 2 DA OVERLAID WITH APPROVED CONCEPT ENVELOPE (IN RED)

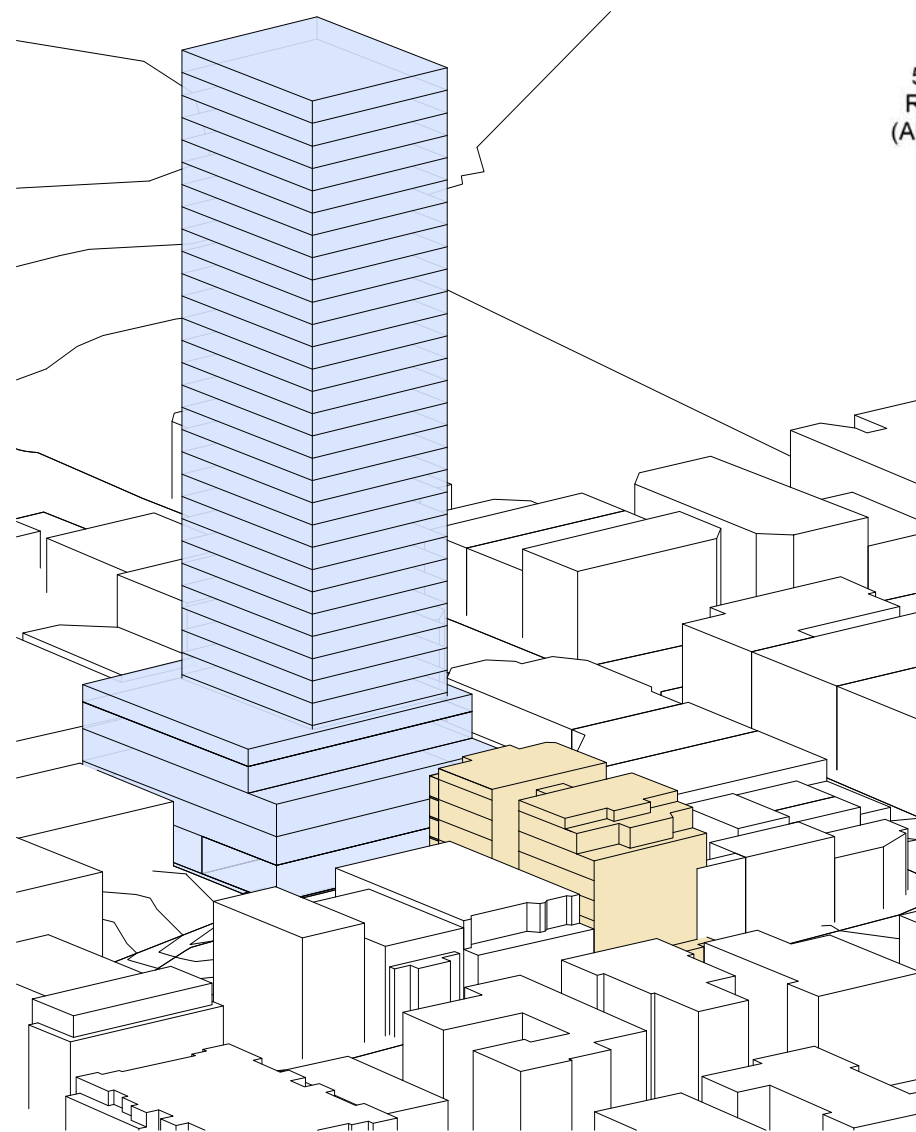
NOTE:

ALL INFORMATION RELATED WITH EXISTING RESIDENTIAL DEVELOPMENT AT 58 BATHURST STREET IS APPROXIMATE BASED ON NEARMAP AND GOOGLE STREET VISUALS. IT IS NOTED THAT ACCURATE INFORMATION ABOUT BUILDING SURVEY, APARTMENT LAYOUTS, BUILDING HEIGHTS ETC. IS NOT AVAILABLE.

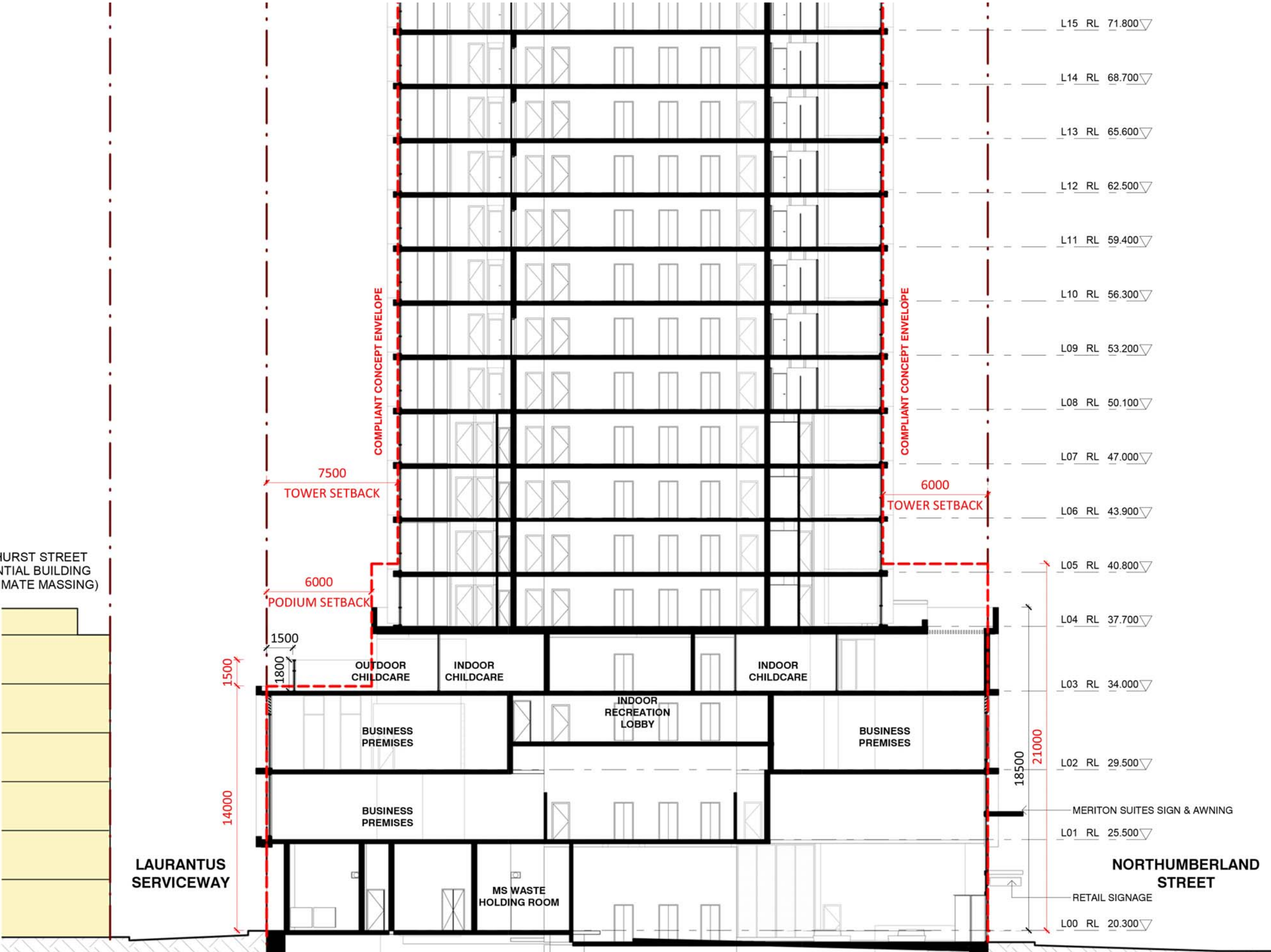
Key Plan:	<div><div>Drawing Disclaimer:</div><div>Do not scale from drawings. Verify all dimensions on site before commencing work. Copying or reproduction of this drawing is strictly prohibited without the consent of PTW Architects</div><div>Note</div><div>PTW takes no responsibility for external building elements. Anything connected with any design, materials selection, construction or installation of any cladding, facade or external building element must be checked by and remains the responsibility of others, including suitably qualified experts as may be required.</div></div>	<table><tr><th>Rev</th><th>Amendment</th><th>By</th><th>Chk*</th><th>Date</th></tr><tr><td>A</td><td>ISSUED FOR DA</td><td>WIT</td><td>SAS</td><td>27/08/2021</td></tr></table>				Rev	Amendment	By	Chk*	Date	A	ISSUED FOR DA	WIT	SAS	27/08/2021	<table><tr><th colspan="2">*Registered Architect</th></tr><tr><td>SAS</td><td>Shilpa Shetye</td></tr><tr><td colspan="2">NSW Arch 11027</td></tr></table>		*Registered Architect		SAS	Shilpa Shetye	NSW Arch 11027		<div>Consultants</div> <div></div>	<div>Client</div> <div>MERITON</div> <div></div> <div>Level 11, Meriton Tower, 528 Kent St, Sydney 2000</div>	<div>Architect</div> <div>PTW Architects</div> <div>Level 11, 88 Phillip Street</div> <div>Sydney NSW 2000 Australia</div> <div>T +61 2 9232 5877</div> <div>ptw.com.au</div> <div></div> <div>Peddle Thorp & Walker P/L</div> <div>ABN 23 000 454 624</div> <div>trading as PTW Architects</div> <div>NSW Nominated Architects</div> <div>S Parsons Architect No.6098</div> <div>D Jones Architect No.4778</div>	<div>NOT TO SCALE</div> <div>Project PA018110</div> <div>MERITON SUITES</div> <div>167 Northumberland, Liverpool</div> <div>Status</div> <div>DEVELOPMENT APPLICATION</div>	<div>Title</div> <div>93-SOLAR ACCESS</div> <div>SUN EYE VIEWS - SHEET 2 OF 3</div> <div></div> <div>Drawing Number</div> <div>DA-93-0120</div> <div>Revision</div> <div>A</div>
		Rev	Amendment	By	Chk*	Date																						
		A	ISSUED FOR DA	WIT	SAS	27/08/2021																						
*Registered Architect																												
SAS	Shilpa Shetye																											
NSW Arch 11027																												



STAGE 2 DA PODIUM SOLAR STUDY
21 JUNE 3:00 PM



APPROVED CONCEPT PODIUM SOLAR STUDY
21 JUNE 3:00PM



EAST- WEST SECTION STAGE 2 DA OVERLAID WITH APPROVED CONCEPT ENVELOPE (IN RED)

SOLAR ACCESS COMPARISON BETWEEN STAGE 2 DA AND APPROVED CONCEPT PODIUM
9:00 AM TO 11:15 AM 21 JUNE

58 BATHURST STREET	APPROVED CONCEPT SOLAR ACCESS	STAGE 2 DA SOLAR ACCESS
South West Unit (LEVEL 1)	1hr 15min (75mins)	1hr 15min (75mins)
South West Unit (LEVEL 2)	1 hr 30min (90mins)	1 hr 30min (90mins)
South West Unit (LEVEL 3)	2 hr (120mins)	2 hr 15min(135mins)
South West Unit (LEVEL 4)	2 hr 15min(135mins)	2 hr 15min(135mins)
South West Unit (LEVEL 5)	2 hr 15min(135mins)	2 hr 15min(135mins)
North West Unit (LEVEL 1)	1 hr 30min (90mins)	1 hr 30min (90mins)
North West Unit (LEVEL 2)	1 hr 45min (105mins)	1 hr 45min(105mins)
North West Unit (LEVEL 3)	2 hr(120mins)	2 hr 15min(135mins)
North West Unit (LEVEL 4)	2 hr 15min(135mins)	2 hr 15min(135mins)
North West Unit (LEVEL 5)	2 hr 15min(135mins)	2 hr 15min(135mins)

CONCLUSION:

- STAGE 2 DEVELOPMENT APPLICATION PODIUM SITS WITHIN APPROVED CONCEPT PLAN
- APPROVED CONCEPT PODIUM GENERATES SOLAR ACCESS OF 2 HOURS ONTO BALCONIES AND LIVING AREAS OF EASTERN FACING UNITS OF 58 BATHURST STREET LIVERPOOL
- STAGE 2 DEVELOPMENT APPLICATION PODIUM INCREASES SOLAR ACCESS TO 2 HOURS AND 15 MINUTES TO BALCONIES AND LIVING AREAS OF EASTERN FACING UNITS ON LEVEL 3 OF 58 BATHURST STREET LIVERPOOL, WHICH REMAINS COMPLIANT WITH APARTMENT DESIGN GUIDELINES AND LIVERPOOL LEP DENSITY AND HEIGHT CONTROLS ENVISAGED FOR CITY CENTRE

NOTE:
ALL INFORMATION RELATED WITH EXISTING RESIDENTIAL DEVELOPMENT AT 58 BATHURST STREET IS APPROXIMATE BASED ON NEARMAP AND GOOGLE STREET VISUALS.
IT IS NOTED THAT ACCURATE INFORMATION ABOUT BUILDING SURVEY, APARTMENT LAYOUTS, BUILDING HEIGHTS ETC. IS NOT AVAILABLE.